



## In This Issue

- The Disaster Risk Reduction Training Program for Countries in Latin America and the Caribbean
- Study Trip to Hiroshima, Kobe & Awaji Island – Global Seismological Observation Course -
- Global Course Participants' Study Trip Reports
- IISEE Council for Training and Promotion held in Tokyo
- IISEE Publications & Websites

## IISEE Net and Training

IISEENET

IISEE-UNESCO Lecture Note

IISEE E-learning

Synopsis Database

Bulletin Database

## The Disaster Risk Reduction Training Program for Countries in Latin America and the Caribbean

*By Dr. Tatsuya Azuhata, Chief Research Engineer of IISEE*

The new technical cooperation project concerning the Disaster Risk Reduction Training Program for Latin America and the Caribbean will be started based on an agreement between the Japan International Cooperation Agency (JICA) and the Chilean International Cooperation Agency (AGSI) from April 2015. The purpose of the project is to strengthen capacity of human resources and networks for disaster risk reduction in Latin America and the Caribbean countries based on Chile.



The highest building "Costanera Center" in Latin America  
-Santiago, Chile-

JICA dispatched a survey team to the Republic of Chile for two weeks from January 25 for preparation of the project. The BRI is planning to collaborate on two training courses of this project, one of which is on "seismic resistant structure" and the other is on "rapid evaluation safety assessment." Thus Dr. Azuhata participated in this team on behalf of the BRI to choose implementing agencies for the training courses and to decide a rough schedule and so on.

As a result, it was determined that the training course on "seismic resistance structure" would be implemented by Pontifical Catholic University targeting young researchers after March 2016, and the training course on "rapid evaluation safety assessment" would be implemented by Ministry of Public Works targeting mainly national/local government officials after September 2015.

The BRI and these implementing agencies will discuss the contents of training courses, in which Japanese technical information is included, more concretely in near future.

## Study Trip to Hiroshima, Kobe & Awaji Island - Global Seismological Observation Course -

*By Dr. Tatsuhiko Hara, Chief Research Scientist of IISEE*

I joined the study trip of the Global Seismological Observation Course to Hiroshima, Kobe and Awaji Island. This study trip is scheduled in the course so

## Earthquakes

The 2011 off the Pacific coast of Tohoku Earthquake

Reports of Recent Earthquakes

Utsu Catalog

Earthquake Catalog

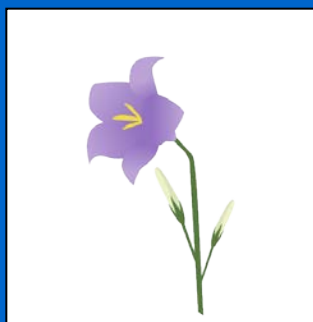
## Call for Papers

IISEE Bulletin is now accepting submissions of papers for the seismology, earthquake engineering, and tsunami. Developing countries are targeted, but are not limited.

Your original papers will be reviewed by the editorial members and some experts.

NO submission fee is need.

Try to challenge!!



that participants can deepen their understandings on earthquakes, earthquake disasters (including recovery and reconstruction from them), and consequences of uses of atomic bombs.

On the 5th of February, we visited the A-bomb dome, and Hiroshima Peace Memorial Museum. Then, we moved to Kobe and visited Disaster Reduction and Human Renovation Institution to learn about the Great Hanshin-Awaji Earthquake that occurred in 1995.

On the 6th, we visited the Nojima Fault Preservation Museum in the Hokudan Earthquake Memorial Park in Awaji Island to observe the preserved surface fault.

The reports of the two participants on this study trip are presented in this newsletter.



G course Participants in front of A-bomb Dome in Hiroshima

## Global Course Participants' Study Trip Reports

### (1) Ms. Yaxuan HU (China)

On February 4-7, 2015, the participants of the Global Seismological Observation Course went to Hiroshima, Kobe and Kyoto for study trip. The trip gave us a lot of knowledge. In Hiroshima Peace Memorial Museum, we were shocked by the displays. On August 6th, 1945, Hiroshima was almost ruined by the atomic bomb. People were hurt by the bomb on both physically and mentally. People were disappointed and the economy was depressed. Human beings should learn from the hazards. We need to use our knowledge to do something for the world without nuclear weapons. Our wish is the elimination of all nuclear weapons and the realization of a genuinely peaceful international community as Hiroshima's deepest wish.



Then, we visited the Disaster Reduction and Human Renovation Institution and Nojima Fault Preservation Museum. On January 17, 1995, a catastrophic earthquake occurred in Hyogoken Nambu. About 6,500 people lost their lives suddenly. In the museums, the attendants gave us explanations in detail, some of which were their experiences. Dr. Hara, along with the group, explained them carefully with his professional knowledge. We can examine the features such as a dislocated road, bifurcated fault, as well as horizontal displacement to the right of a gutter, a hedge and footpath which cross the fault. It was a vivid and rich class.

In the whole trip, Ms. Sakuma along with the group gave us more care and reasonable arrangement. On Saturday evening, we finished the fruitful study trip smoothly.

### (2) Mr. Muhammad Joned (Pakistan)

Study trip to Kansai areas (Hiroshima and Kobe) on February 5 & 6, 2015 was really very much informative and advantageous. After visiting Atomic Bomb Dome and Hiroshima Peace Memorial Museum, the catastrophic humanitarian consequences associated with the use of nuclear weapon should be fully



Enjoy, Now

## Contact Us

The IISEE Newsletter is intended to act as a go-between for IISEE and ex-participants.

We encourage you to contribute a report and an article to this newsletter. Please let us know your current activities in your countries.

We also welcome your co-workers and friends to register our mailing list.

iiseenews@kenken.go.jp  
<http://iisee.kenken.go.jp>

## Back Numbers

<http://iisee.kenken.go.jp/nldb/>



understood to almost everyone. Also a strong message should be echoing to everyone that “nuclear weapons and humanity cannot coexist together.” To save the humanity, global efforts are required to abolish nuclear weapons.

The Disaster Reduction and Human Renovation Institution (DRI) in Kobe showed us all the damage caused by the devastating Great Hanshin-Awaji Earthquake (Kobe earthquake) on January 17th, 1995,

at 05:46 of magnitude of 7.3 JMA. The important lesson learnt from this earthquake was that how government and society worked together to rebuild the beautiful city which should be highly appreciated.

This study trip promoted better understanding of history as a viable means for peace and reconciliation.

---

## IISEE Council for Training and Promotion held in Tokyo

*By Ms. Yoriko Iiba, Head of IISEE Administration Division*

The meeting of the Council for Training and Promotion of the International Institute of Seismology and Earthquake Engineering was held in Yotsuya, Tokyo on the 20th of February. The Council is constituted on the purpose of giving advice and suggestion to the BRI Chief Executive relating to the activities of dissemination of knowledge and technology of seismology and earthquake engineering as well as the planning and implementation of the training program.

Fourteen members including the chair, Dr. Yoshimitsu Okada, CE of NIED of Japan were present. We greatly appreciate the cooperation they has given us.

### **Dear IISEE ex-participants:**

**We are very pleased to inform you the news of IISEE.**

**IISEE has been nominated for the 2015 UN-Sasakawa Award.**

**The United Nations Sasakawa Award for Disaster Reduction is awarded to an individual or institutions that have taken active efforts in reducing disaster risk in their communities and advocates for disaster risk reduction. IISEE is now presented in its longlist.**

**<http://www.wcdrr.org/sasakawa>**

**A winner from among this longlist of 33 nominees will be announced at a prize-giving ceremony in the Third World Conference on Disaster Risk Reduction in Sendai-city, Japan, on 17 March 2015.**

**It would be greatly appreciated if you could support IISEE by tweeting your comments in the URL below.**

**<http://www.wcdrr.org/sasakawa/nominees/3923>**

**Thank you for your support in advance.**

**IISEE**

# IISEE Publications & Websites

## ☆Publications

We bring out the following publications.

(1) **Brochure of IISEE (in Japanese & in English)**

It is an 8 page gate fold brochure. The contents are introduction to IISEE training program and its activities. The new version was published at the end of last year.

(2) **IISEE Annual Report (in Japanese)**-----Once a year

It is a yearly report from September to October next year to release our training activities to the public. The history of IISEE, the list of participants and lecturers, training schedule, curricula, the themes of individual studies, the organization chart. etc. are included. The issue number of 40, 2013-2014 version, has recently been published.

(3) **Bulletin of IISEE (in English)**-----Once a year

It is published annually in order to exchange knowledge and techniques related to seismology, earthquake engineering and tsunami disaster mitigation. It is distributed to the organizations concerned. The articles contain the topics in the above fields in developing countries. The categories expected for contribution are abstracts of master papers, original research papers, technical notes, reviews and reports. We always welcome your contributions. The issue number of 49 is now printing.

(4) **YearBook (in English)**-----Every other year

It is issued every second year to facilitate the network of the training participants and distributed to the limited members. The main purpose of IISEE is Japan's dedication to the earthquake-prone developing countries by human development in the fields of seismology, earthquake engineering and tsunami disaster mitigation. It is a valuable source of information of between IISEE and participants. The issue number of 32 is now printing.

## ☆Websites

We go public a database of earthquake and training information through the website (<http://iisee.kenken.go.jp/>).

(1) **IISEE Net**---- (<http://iisee.kenken.go.jp/net/>)

IISEE Net (Information Network of Earthquake Disaster Prevention Technologies) releases the information of earthquake disaster mitigation of buildings. It accumulates technical information (seismic design code, seismic network and activities, seismic damage, and microzonation) from mainly developing countries.

(2) **BRI Strong Motion Observation**

----- (<http://smo.kenken.go.jp/>)

It provides the recent strong motion observation data from more than 70 strong motion stations throughout Japan. BRI has been conducting the strong motion observation for building structures since 1957.

(3) **Others**

**IPRED (International Platform for Reducing Earthquake Disasters)** ----- (<http://iisee.kenken.go.jp/?p=ipred>)

