



IISEE Newsletter



July 1, 2022

International Institute of Seismology and Earthquake Engineering BRI Japan

Number 206

1 Tachihara Tsukuba Japan 305-0802 tel+81-29-879-0678 facsim+81-29-864-6777

In This Issue

- Latin American earthquake engineering course, the first colloquium, "Inception Report Presentation"
- Congratulations for the 70th anniversary of the DOST-PHIVOLCS Report on Study Trip -IISEE Regular Course-
- Introduction of personal changes
- Greeting from new IISEE staff
- Research paper co-authored by Dr. Hayashida and Dr. Yokoi was published online in Journal of Seismology

IISEE Net and Training

IISEENET

IISEE-UNESCO Lecture Note

IISEE E-learning

Synopsis Database

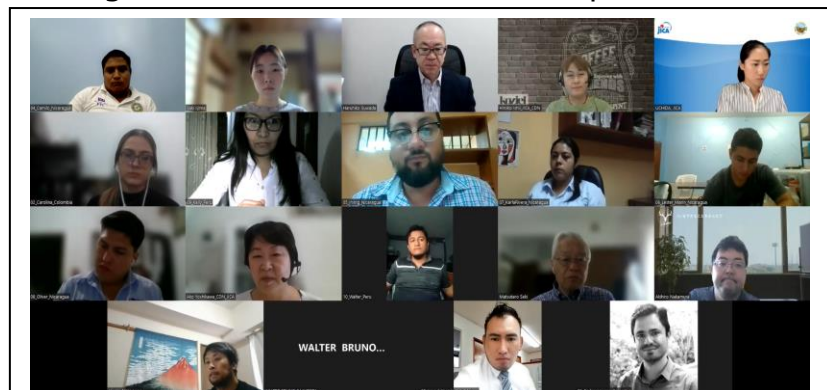
Bulletin Database

Latin American earthquake engineering course, the first colloquium, "Inception Report Presentation"

By Dr. Haruhiko Suwada, Senior Research Scientist, IISEE

In the 2022 Latin American course which has been conducted remotely since May 12, the first colloquium, "Inception Report Presentation," was held on May 25 and 26, and 10 participants from four countries (Mexico, Nicaragua, Colombia, and Peru) presented basic information on seismic codes and policies in their countries, an overview of their organizations and duties, issues they face in their work, and their expectations for this training course.

The common problems that were pointed out in many countries included the fact that although seismic codes themselves exist, they are not always observed due to a lack of engineers, inadequate management systems, etc., and that technologies for seismic evaluation and seismic retrofit of existing buildings that do not comply with the standards have not yet been established. This training course is designed not only to improve the knowledge of the participants themselves, but also to provide them with advice throughout the entire process on how to formulate their own action plans for improvement based on their understanding of these realities in their respective countries.



Inception Report Presentation

Earthquakes

The 2011 off the Pacific coast of Tohoku Earthquake

Reports of Recent Earthquakes

Utsu Catalog

Earthquake Catalog

Call for Papers

IISEE Bulletin is now accepting submissions of papers for the seismology, earthquake engineering, and tsunami. Developing countries are targeted, but are not limited.

Your original papers will be reviewed by the editorial members and some experts.

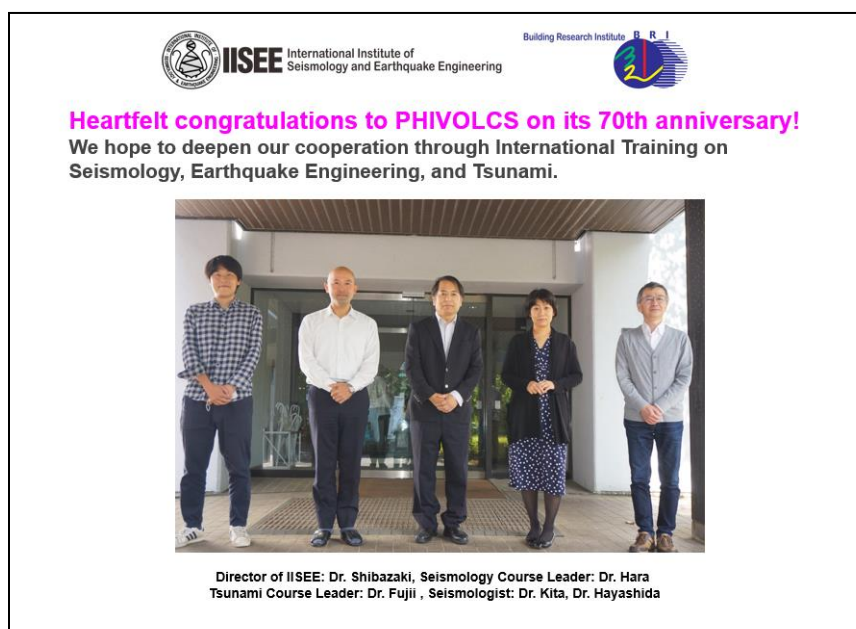
NO submission fee is needed.

Try to challenge!!

Congratulation for the 70th anniversary of the DOST-PHIVOLCS

By Dr. Tatsuhiko Hara, Chief Research Scientist, IISEE

The 70th anniversary symposium of the Department of Science and Technology - Philippine Institute of Volcanology and Seismology (DOST-PHIVOLCS), "Advances in SEVENTY (Science and Technology in Years) and DRRM" was held on June 21, 2022 at the PHIVOLCS Auditorium, Diliman, Quezon City. The IISEE seismology and tsunami staff sent a congratulatory message for the 70th anniversary, which was introduced during the symposium with many messages from researchers and officials of national and foreign organizations. Some of the IISEE staff attended the symposium online. We were much impressed by the advances which were presented that were achieved by the DOST-PHIVOLCS in various fields including multi-hazards in its history.



Introduction of personal changes

By Mr. Takahiro Yamada, Head of Administration Division, IISEE

As of June 1, Dr. Moeko Matoba, a researcher, was transferred to IISEE as a new member from the department of Structure Engineering.

Contact Us

The IISEE Newsletter is intended to act as a go-between for IISEE and ex-participants.

We encourage you to contribute a report and an article to this newsletter. Please let us know your current activities in your countries.

We also welcome your co-workers and friends to register our mailing list.

iiseenews@kenken.go.jp

Back Numbers

<http://iisee.kenken.go.jp/nldb/>

Greeting from new IISEE staff

By Dr. Moeko Matoba, Research Engineer, IISEE

Hello! I'm Moeko Matoba, a research engineer of IISEE since the 1st of April 2022. Since I obtained a doctorate in engineering at Tohoku University in March 2020, I have worked in the structural engineering department of BRI. I am focused on the pile foundation's structural capacity and design methodology.

My research is based on model-scale tests

using the centrifugal loading device and Finite Element Analyses.

I'm looking forward to working with all of you!



Research paper co-authored by Dr. Hayashida and Dr. Yokoi was published online in Journal of Seismology

By Dr. Takumi Hayashida, Senior Research Scientist, IISEE

The seismic velocity structure of the shallow ground largely influences the ground shaking behavior during earthquakes. Microtremor surveys are widely used as a method to estimate surface S-wave velocities. A research paper co-authored by Dr. Hayashida and Dr. Yokoi (Visiting Research Fellow of IISEE) was available online in Journal of Seismology on April 23 (Asten et al., 2022; published on January 1). Dr. Michael Asten (Research Director of Earth Insight: former professor at Monash University, Australia) is the first author. In the paper, experts worldwide analyzed the same microtremor records and discussed how much the results vary depending on the analyst, the methods used, the decisions made, the amount of information given in advance, and the software used. IISEE team used the tool available on our website (<https://iisee.kenken.go.jp/net/?mod=spac>) to estimate the velocity structure models and confirmed that the results were comparable to those of other participants.

The paper can be accessed free of charge at the link below. Please read it if you are interested.

<https://link.springer.com/article/10.1007/s10950-021-10059-4>