

9 How to organize files and directories.

Storage of GRASS data:

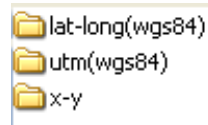
The data loaded to GRASS are stored under the directory:

[C://cygwin/home/your_account_name/grass_database](#)

For the examples,

[C://cygwin/home/yokoi/grassdata](#)

Its subdirectories contain the files for the LOCATIONS.



Don't conduct anything to the files and directories using file manager softwares except erasing or back-uping LOCATION entirely.

The operations must be done using GRASS command or its GUI.

Back up can be done by copying the subdirectory [grass_database](#) or those for individual LOCATIONS to other media using file manager, or by back-uping them using the usual back up tools for MicroSoft Windows.

Storage of PostgreSQL data:

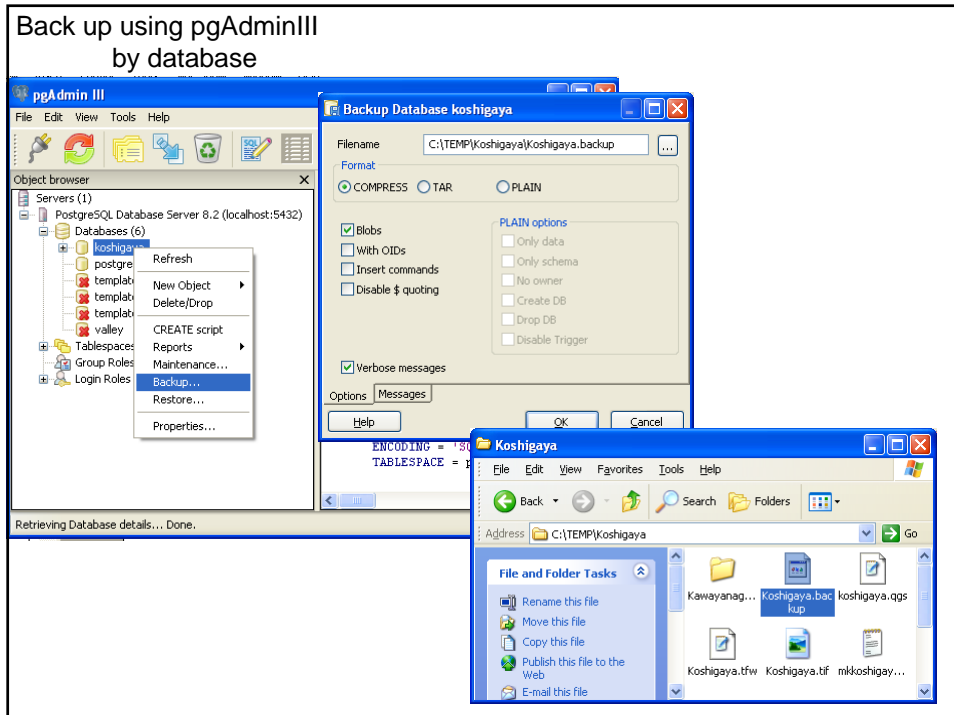
The data loaded to PostgreSQL are stored under the directory:

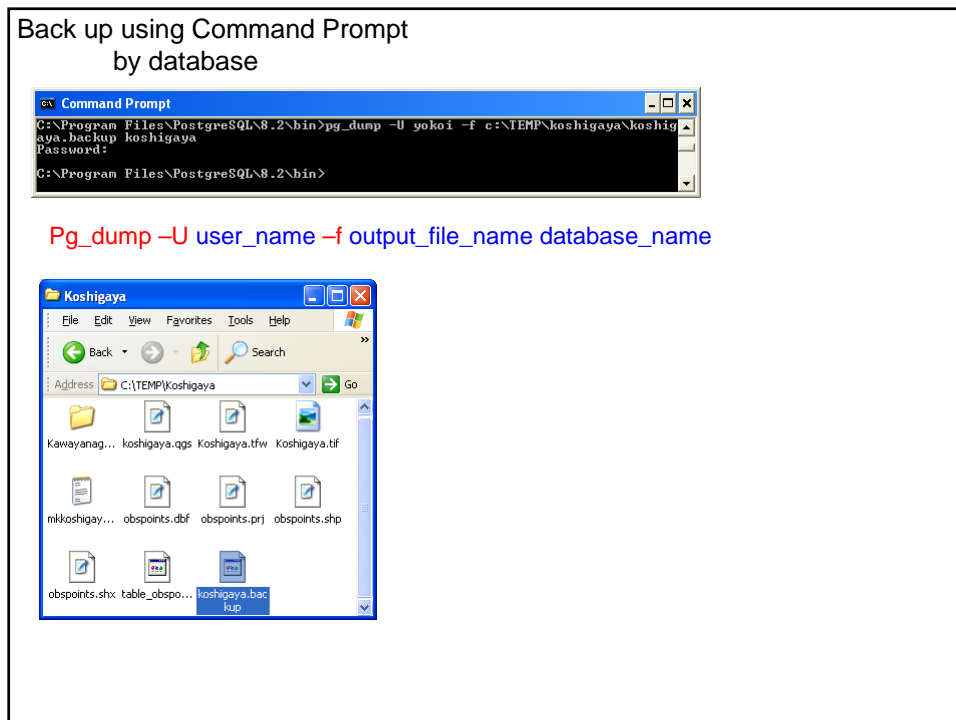
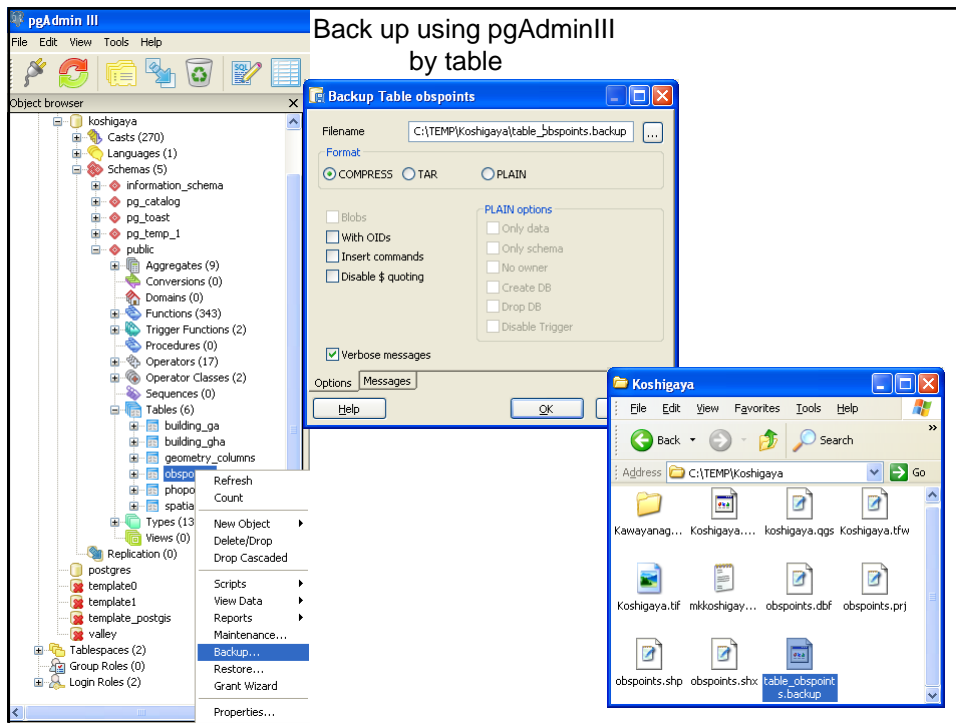
C:\Program Files\PostgreSQL\8.2

Don't conduct anything to the files and directories using file manager softwares.

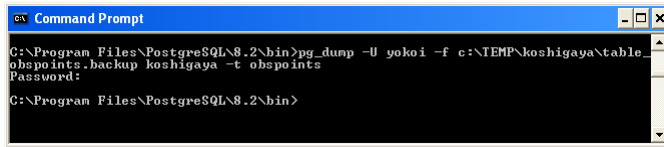
The operations must be done using PostgreSQL **Command Prompt** or **pgAdminIII**.

An alternative way is to export the tables to Shape files.



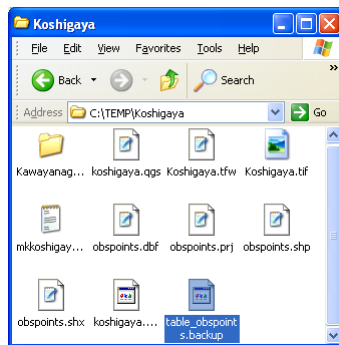


Back up using Command Prompt by table



```
cs Command Prompt
G:\Program Files\PostgreSQL\8.2\bin>pg_dump -U yoko -f c:\TEMP\koshigaya\table_
obspoints.backup koshigaya -t obspoints
Password:
G:\Program Files\PostgreSQL\8.2\bin>
```

`Pg_dump -U user_name -f output_file_name database_name table_name`



Storage of QGIS data:

QGIS does not store data in itself. The data loaded are actually linked from:

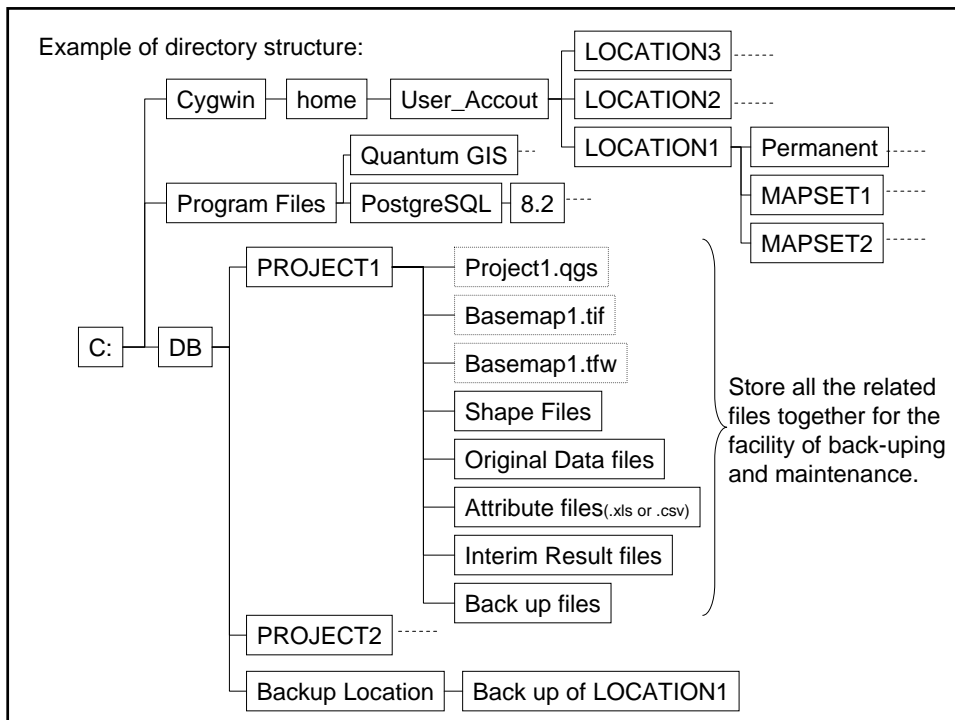
- Raster (e. g., GeoTiff) & Vector (e. g., Shape) data files,
- PostGIS layers (tables of PostgreSQL database),
- GRASS Raster & Vector maps.

When a project of QGIS is saved, the saved project file *.qgs only contains the information from where the files, layers and maps are linked, and the information how they are set in QGIS.

Project file *.qgs is path specific. Once directory structure is changed old *.qgs files can not load necessary information anymore.

It is recommendable to set a directory structure for the QGIS files when the task is started and never change it.

All the names of directory, files etc. shall be set as short as possible. In some cases, full path name has to be written within the limited character numbers.



The previous slide shows just an example. There can be many alternative ways to organize the files and directories. The important point is to locate the related files not in a scattered way in HD, not in a mixture with other files, but a compactly organized way .