

Seismic Observations of Algeria

Mr. Faouzi GHERBOUDJ (2013-2014 Seismology Course)

National Center of Applied Research in Earthquake Engineering, Algeria

1. National Strong Motion Network

The National Center of Applied Research in Earthquake Engineering (CGS) operates a network of over 300 accelerograph stations across Algeria consisting of 170 analog stations SMA-1, 40 digital stations SSA-1 and 125 digital stations Etna as shown in Figure 1.

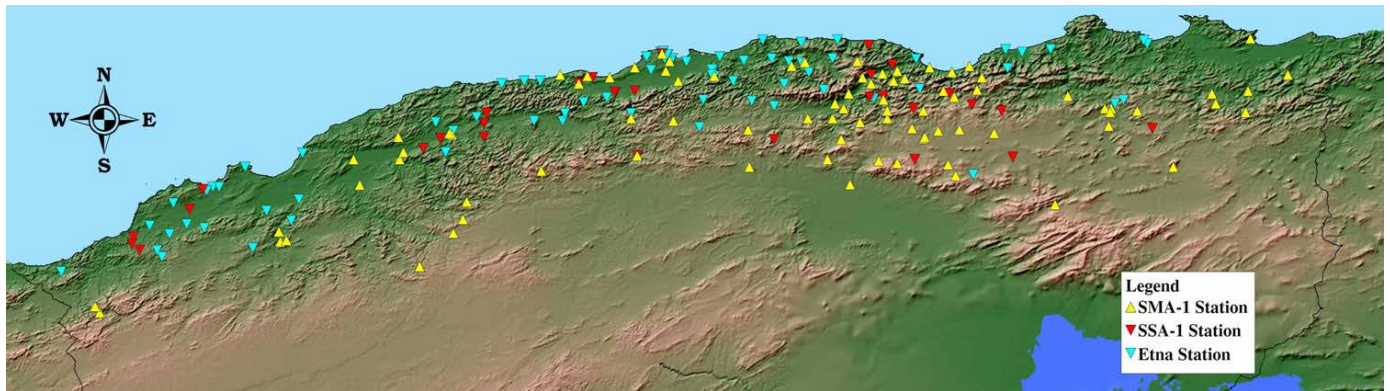


Figure 1. Accelerometric Network Distribution of CGS.

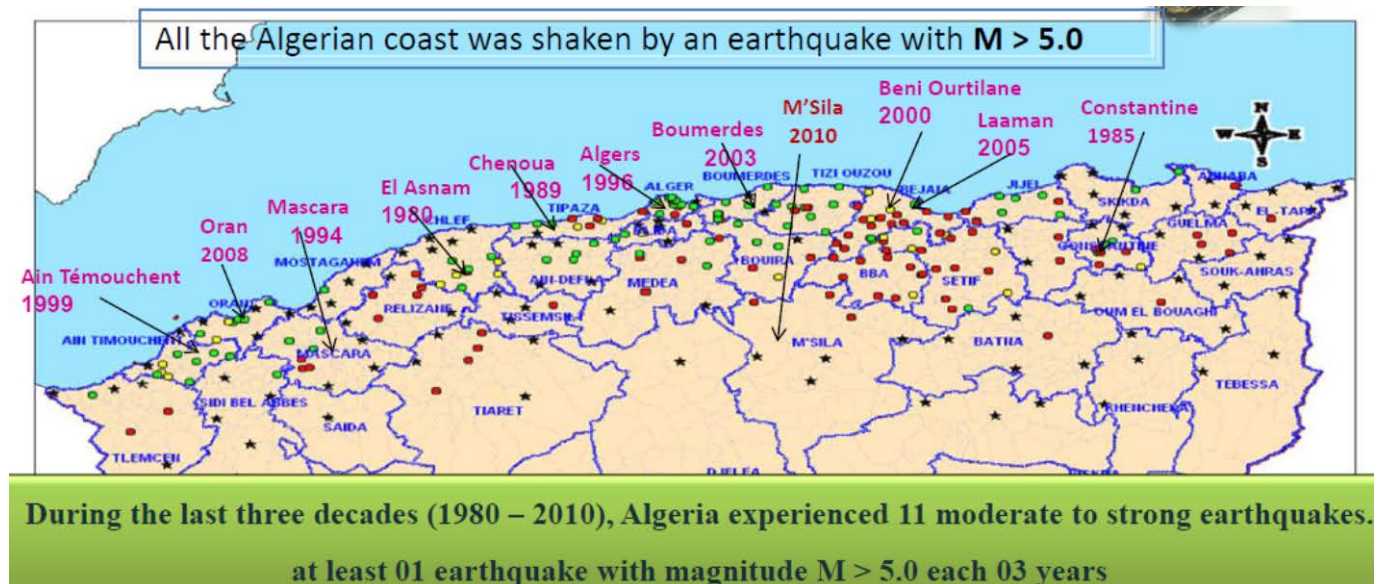


Figure 2. Major Earthquakes in the Past

2. Broadband Stations (National Network)

CGS established five broadband stations in 2003 as shown in Figure 3.

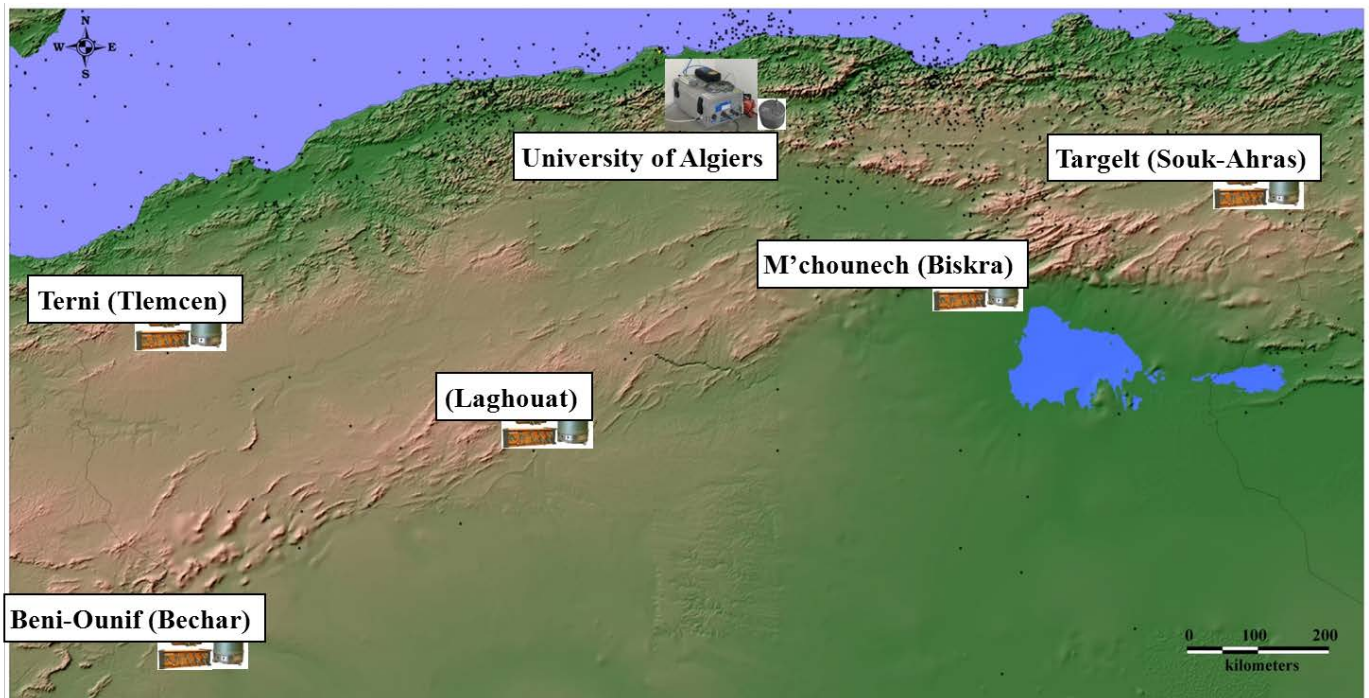


Figure 3. Broadband Stations (National Network)

3. Short Period Stations

CGS established 10 short period stations in 2003 which are used for aftershock's recording (Figure 4).

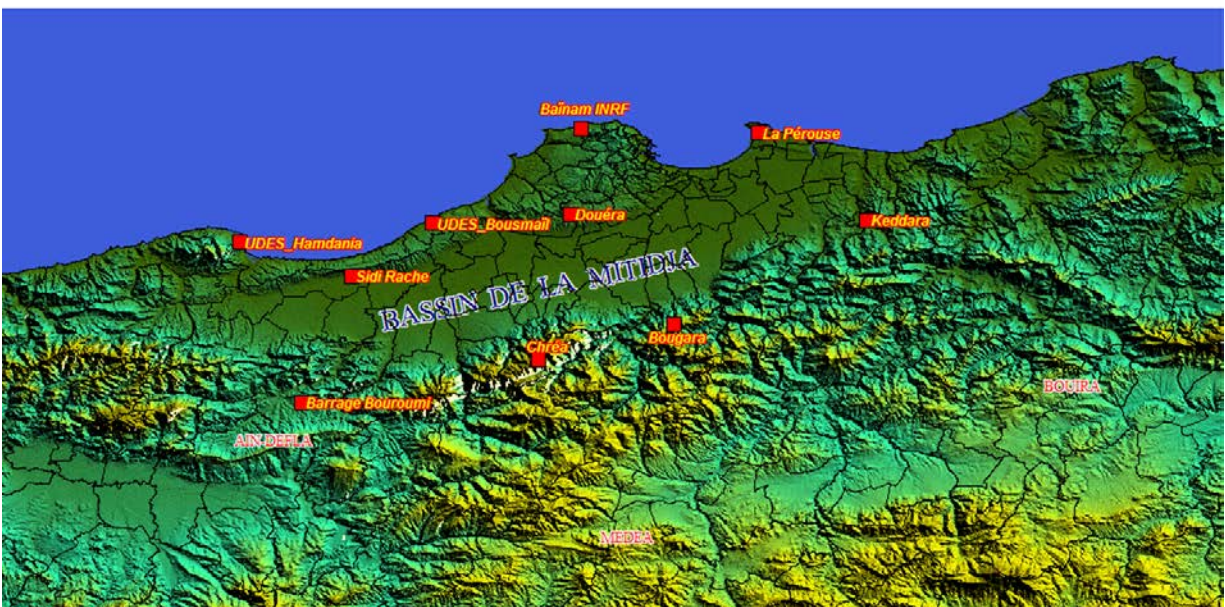


Figure 4. Short Period Network in Mitidja Basin

4. Equipment

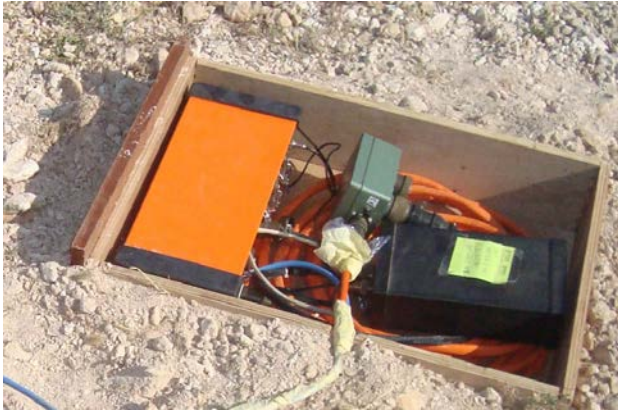


Figure 5. Broad Band Station
Data Logger Quanterra Q330 and
Packet Baler Model 14D



Figure 6. Short Period Stations
Data Logger Kinematics K2
Sensor Lennartz LE-3Dlite



Figure 7. Broad Band Station
Sensor Strikisen STS2



Figure 8. Broad Band Station
Sensor Strikisen STS2
Force-balance VBB, symmetric-triaxial,
Flat response velocity 8.33 mHz(120sec) to50Hz,
Generator constant 1500 Vs/m,
24bits, Weight 13kg,
Size: 23cm dia., 26cm high.